

iu.org

COMPANY PRESENTATION

**WELCOME TO THE PIONEER
IN DIGITAL EDUCATION.**

I. VISION & REVOLUTION.

II. FACTS & DEVELOPMENT.

III. ORGANISATION.

IV. STUDY MODELS & PROGRAMMES.

V. CERTIFICATES & AWARDS.



OUR VISION – A REVOLUTION:

EVERYBODY CAN ACCESS EDUCATION TO GROW.



We are pioneers and visionaries of academic, digital education. IU International University of Applied Sciences **EMPOWERS EVERYONE** around the globe with the opportunity to grow through **FLEXIBLE, SELF-DETERMINED EDUCATION** – regardless of their personal, professional or financial situation, nationality or origin.

OUR MISSION – PERSONALIZED & CUSTOMER CENTRIC.

With innovative study and further education formats, plus maximum flexibility via our on-site and virtual offerings IU International University of Applied Sciences delivers the most customer-centric, personalised education. Additionally, we support everyone with individual coaching and innovative learning technologies like our award winning MyIU app and customised learning journeys supported with AI-technology to name a few.

That leads to our guiding principle:

MY LIFE. MY WAY.

MY EDUCATION.



OUR VISION – OUR MISSION:

VISION

EVERYBODY CAN ACCESS EDUCATION TO GROW.

We are the university that makes education possible for everyone without compromise. Regardless of their personal, professional or financial situation, nationality or origin.



MISSION

**WE MAKE SELF-
DETERMINED, FLEXIBLE
EDUCATION POSSIBLE.
WITH MAXIMUM
CUSTOMER FOCUS.**

SYNTEA – NEW STAGE OF EVOLUTION IN SELF-DETERMINED EDUCATION

IU's AI-based learning buddy accompanies and supports students on their individual learning journey. Syntea proactively motivates and empowers students to learn, allowing students to reach their full potential.

01

**FIRST NLP-
APPLICATION**

First NLP application at university level; AI-based and machine learning capable

02

**150,000+ H LEARNING CONTENT
UND 1,000+ MODULES**

Access to the comprehensive virtual learning library

03

**10,000+ USERS
FROM 100+ COUNTRIES**

Syntea is already in use at universities and is being rolled out continuously in more and more courses

04

**24/7
AVAILABILITY**

Around the clock availability, location-independent and personalised

05

**COMPLETELY
EXPANDABLE**

Syntea is fully scalable and receives continuous upgrades

06

**DEVELOPED
IN-HOUSE**

Developed and tested within the university

FRONT RUNNER – IN EDUCATION & SUSTAINABILITY.



AMONG THE FIRST ENVIRONMENTALISTS.

As the first climate-neutral certified online learning university in Germany, **WE HAVE BEEN TEACHING AND WORKING CLIMATE-NEUTRAL SINCE 2020.** This is confirmed by TÜV Süd **ACCORDING TO THE INTERNATIONAL SPECIFICATION PAS 2060.**



INITIATIVES FOR ENVIRONMENTAL PROTECTION.

We at IU constantly look for ways to **REDUCE OUR GREENHOUSE GAS EMISSIONS.** At the same time, we compensate any CO₂ emissions through renowned **INTERNATIONAL PROJECTS.** For instance, this year we support projects developing wind power generation in the northeast of Brazil, hydropower in northern Laos, as well as the access to clean drinking water for communities in Mozambique.



CHALLENGING US & OUR STUDENT COMMUNITY.

IU is motivating its students to contribute to fighting climate change and **MAKING THE WORLD A LITTLE GREENER:** in cooperation with our partners, we are planting a tree for every fifth script that our students decide not to print on paper. So far we have **PLANTED OVER 24 THOUSAND TREES** (as at early 2023).

OUR PROOF POINTS. MAKE THE DIFFERENCE.



SUSTAINABILITY THROUGH EDUCATION.

In partnership with IU International University of Applied Science (IU), the Study Access Alliance provides **100,000 FULL SCHOLARSHIPS FOR ONLINE DEGREES** to people in African countries. By making university education accessible to financially disadvantaged students, the initiative reduces inequalities, solves pressing digital skills needs, and thereby contributes to **OVERALL SUSTAINABLE ECONOMIC DEVELOPMENT.**



FROM RESEARCH INTO PRACTICE.

Through scientific trend studies and a focus on research and technological innovations like our self-developed **LEARN BUDDY SYNTEA** or **AI-SUPPORTED LEARNING TOOLS**, IU tackles the challenges of tomorrow. That's how we contribute to sustainable development and promote relevant skills and **TECH INNOVATIONS.**



A CULTURE OF EVERYONE, BY EVERYONE.

At IU everyone's voice is heard and our culture is based on **DIVERSITY, INCLUSION** and **BELONGING.** Our university as well as our team is heterogeneous. We stand up for **EQUALITY, BARRIER-FREE ACCESS** and **FORWARD-THINKING, FLEXIBLE WORK** opportunities because we aim to make education and careers accessible to everyone.

I. VISION & REVOLUTION.

II. FACTS & DEVELOPMENT.

III. ORGANISATION.

IV. STUDY MODELS & PROGRAMMES.

V. CERTIFICATES & AWARDS.



THE FACTS? ALSO REVOLUTIONARY.



POWERS IN DIGITAL ACADEMIC EDUCATION.

With our didactic and technical innovations, we offer **FUTURE-ORIENTED, EFFICIENT STUDIES** and **LEARNING**. In order to perfectly prepare our students for the working world of tomorrow, we develop innovative solutions and tools ourselves, such as our digital voice assistant Syntea or other AI-supported learning programmes.



SYSTEM-ACCREDITED AND AWARDED.

All of our programmes are state-recognised, system-accredited and continuously monitored for quality. **WE ARE NO. 1** on studycheck.de and **AWARDED by several rating platforms** like the CHE Rankings or fernstudiumcheck.de.



GERMANY'S LARGEST UNIVERSITY.

IU International University of Applied Sciences is Germany's largest state-approved university. With over **100,000 STUDENTS** and more than **200 ACCREDITED DEGREE PROGRAMMES**.

NUMBERS SPEAK LOUDER THAN WORDS.

100,000+

STUDENTS

15,000+

CORPORATE
PARTNERS

178

STUDENT
NATIONALITIES

500+

ACCREDITED
DEGREE PROGRAMMES

30+

LOCATIONS
IN GERMANY

60%

FEMALE
LEADERSHIP

400,000+

SOCIAL MEDIA
FOLLOWERS

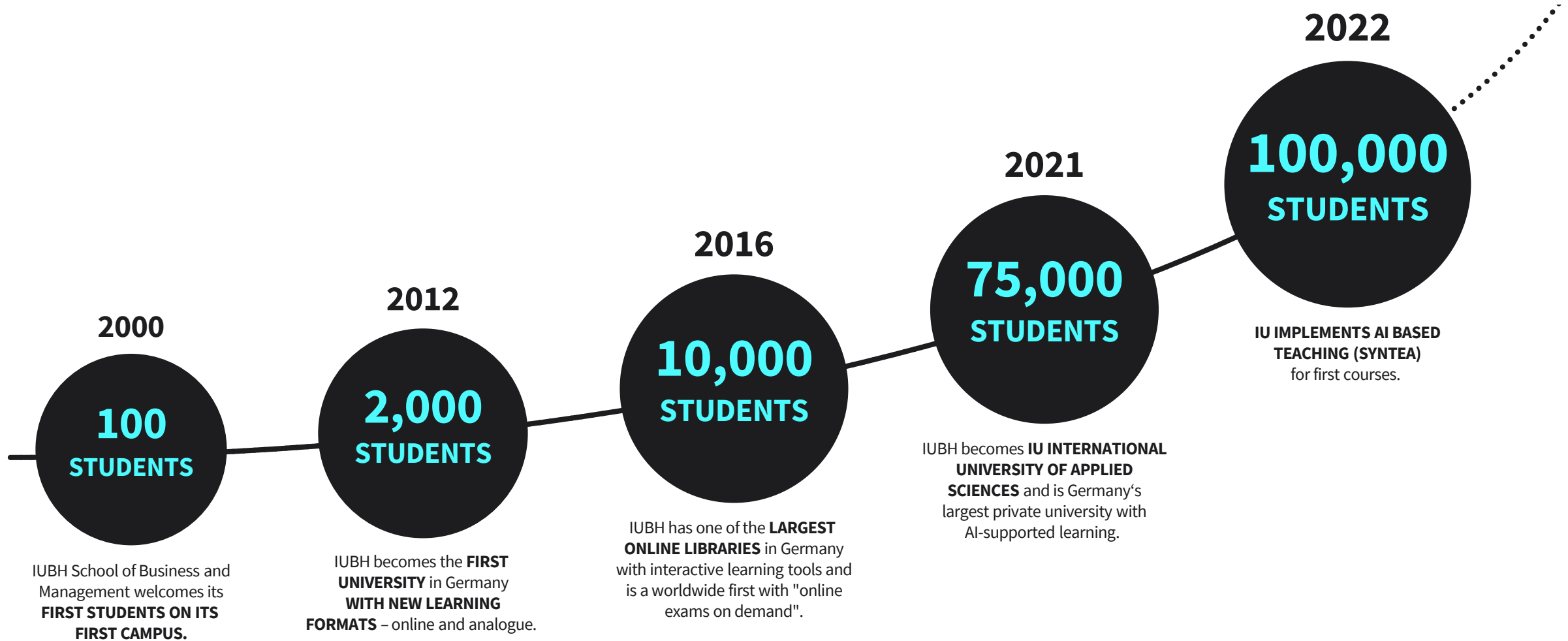
3,000+

EMPLOYEES

14,000+

EDUCATIONAL
COURSES

OUR DEVELOPMENT BRINGS OUR STUDENTS AHEAD.



I. VISION & REVOLUTION.

II. FACTS & DEVELOPMENT.

III. ORGANISATION.

IV. STUDY MODELS & PROGRAMMES.

V. CERTIFICATES & AWARDS.



ONE FAMILY. ONE VISION: REINVENTED EDUCATION.

MANAGING DIRECTORS



DR. SVEN SCHÜTT

CHIEF EXECUTIVE OFFICER

Skilled leader of public and private enterprises

AI thought-leader with background in neurosciences



MARVIN LANGE

CHIEF FINANCIAL OFFICER

Experienced CFO in high-volume digital businesses

Expertise in supporting hypergrowth strategies

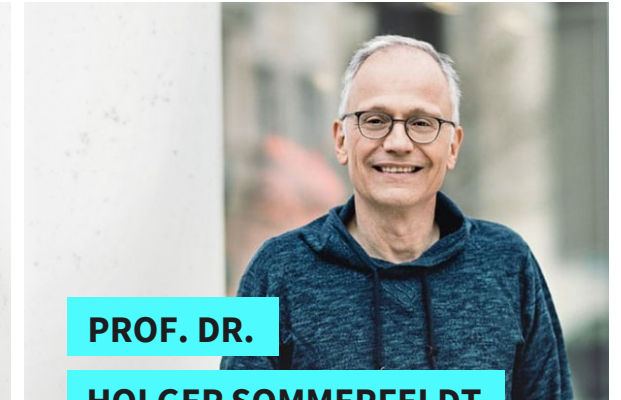


DR. CARMEN THOMA

CHIEF OPERATING OFFICER

Economist with vast analytical skillset

Expert in data-driven digital sales and marketing



PROF. DR.

HOLGER SOMMERFELDT

CHIEF ACADEMIC OFFICER

Background in high-class research and academia

Visionary for the digital learning experience

PART OF

iu GROUP

OUR VISION – SUPPORTED BY INTERNATIONAL THOUGHT LEADERS.

IU International University of Applied Sciences (IU) is strengthening itself with a **NEWLY CONSTITUTED ADVISORY BOARD**, to provide education that is accessible for everyone to impart the key qualifications of tomorrow. The distinguished group of **EXPERTS FROM SCIENCE, BUSINESS AND POLITICS** share IU's vision and will accompany IU on its way to becoming a leading global education provider.

DR FRANK WEISE

Dr Frank Weise is one of Germany's leading experts on the future of education and employment and has also been involved in recent years as a board member of the non-profit Hertie Foundation and as President of Johanniter-Unfall-Hilfe.

JIMMY WALES

The US entrepreneur is a strong advocate for the democratisation of knowledge. With the founding of Wikipedia, Jimmy Wales has realised his vision of a comprehensive, neutral platform that unites the world's knowledge, leverages collective intelligence and is freely accessible.

AMBASSADOR KAMISSA CAMARA

Ambassador Kamissa Camara (former Minister of Foreign Affairs of the Republic of Mali), born in France, is a political and intellectual translator between Africa and the West and is particularly committed to global educational justice.

RAFFAELA REIN

EdTech-expert and a formative protagonist in the European start-up, VC and tech industry, Raffaela Rein founded with Career Foundry Europe's largest online training platform in the field of user experience design.

PROF. DR TOBIAS BONHOEFFER

As director at the Max Planck Institute for Biological Intelligence (in foundation), Prof Dr Tobias Bonhoeffer works intensively on the cellular foundations of learning and memory.

DR KARINA MONTILLA EDMONDS

Living in California and working at the interface between science and business, Dr Karina Montilla Edmonds promotes knowledge transfer between research and the private sector and aims to attract young talent to careers in technology.

LUCY STONEHILL

Being the founder of BridgeU, Lucy Stonehill literally builds bridges between school, higher education and professional life, using data-driven decision-making to support students in post-secondary planning.

I. VISION & REVOLUTION.

II. FACTS & DEVELOPMENT.

III. ORGANISATION.

IV. STUDY MODELS & PROGRAMMES.

V. CERTIFICATES & AWARDS.



EDUCATION ACCORDING TO NEEDS. WITH THE MARKET LEADER.

01

DISTANCE LEARNING – 100 % ONLINE

Flexible full-time and part-time study programmes for Bachelor, Master and MBA degrees. 100% online.

02

DUAL STUDIES – THEORY & PRACTICE

Study and work at the same time. With a large network of over 15,000 companies.

03

MYSTUDIES – MAXIMUM FLEXIBILITY

Perfect mix of face-to-face and online teaching, plus on-site or virtual campus events.

04

IU ACADEMY – UPSKILLING FOR EVERYONE

From further education courses for companies via whitelabel upskilling to state-funded learning programmes.

THE POSSIBILITIES ARE AS DIVERSE AS OUR STUDENTS.

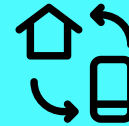
SELF-DETERMINED LEARNING means something different for everyone. That's why **EVERYTHING IS POSSIBLE** at **IU INTERNATIONAL UNIVERSITY OF APPLIED SCIENCES (IU)**: analogue and digital learning, with personal interaction and the latest learning technology.



**CAMPUS
STUDIES**



**VIRTUAL
CAMPUS ONLINE**



**BLENDED
LEARNING**



MY IU



SYNTEA

Digital academic education opens up ground-breaking new possibilities. We are pioneers because we develop innovative digital learning concepts and tools ourselves. Our learning concepts tear down boundaries so that our students can learn according to their preferences and in the manner that best suits their situation. In other words: **WITH IU, EVERYONE CAN LEARN THE WAY THEY WANT.**

FOR EVERY SITUATION & EVERY CAREER. STUDY OVER 200 ACCREDITED DEGREE PROGRAMMES.



**ARCHITECTURE &
CONSTRUCTION**



**DESIGN &
MEDIA**



**HEALTH &
SOCIAL AFFAIRS**



**IT &
TECHNOLOGIES**



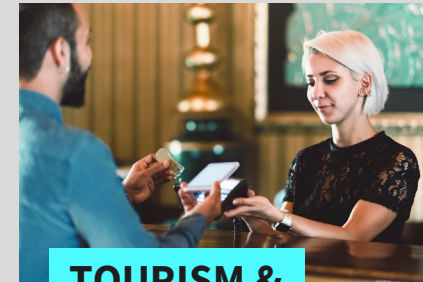
**MARKETING &
COMMUNICATION**



**PEDAGOGICS &
PSYCHOLOGY**



**HUMAN
RESOURCES & LAW**



**TOURISM &
HOSPITALITY**



**BUSINESS &
MANAGEMENT**

ALWAYS PRACTICE-FOCUSED. THE IU DUAL STUDY NETWORK.

The dual study programme at IU International University of Applied Sciences (IU) ensures that our students gain on-the-job experience during their studies. Via an innovative match-maker technology, IU provides direct contact for its students to its wide network of partners from 15,000 globally renowned **TOP CLASS COMPANIES:**

Panasonic



Radisson BLU
HOTEL, FRANKFURT

CHECK24



ENGEL & VÖLKERS[®]



DRK Hamburg
Ambulante Soziale
Dienste GmbH

ALWAYS CUSTOMER-CENTERED. THE IU PARTNER NETWORK.

IU International University of Applied Sciences stands for individual study and further education opportunities, offers a worldwide network of partners and cooperates with many renowned international companies. This includes upskilling offers, international study formats and whitelabel solutions. Always with the goal to offer top-notch educational concepts for everyone. Some examples from our partner network:



straighterline

simplilearn

 Singularity



 Great
Learning

upGrad
Abroad 

 IntelliPaat

OUR NETWORK BONUS: THE IU ALUMNI COMMUNITY



OVER 10.000 PROFESSIONALS

Graduates of IU International University of Applied Sciences (IU) can take advantage of the ever-growing IU Alumni Community with a wide range of companies and organisations.



CAREER SUPPORT

A successful network of support, contacts and potential future career opportunities like job offers and training gets the career moving.



REGIONAL CHAPTERS

IU is bringing graduates and students together and promoting exchange within the alumni community of IU on a regional level.

- I. VISION & REVOLUTION.**
- II. FACTS & DEVELOPMENT.**
- III. ORGANISATION.**
- IV. STUDY MODELS & PROGRAMMES**

V. CERTIFICATES & AWARDS.



WE OFFER EDUCATION AT THE HIGHEST LEVEL.

As Germany's largest private university, IU International University of Applied Sciences has been creating the most innovative educational formats and programmes for more than 20 years. And because quality is crucial, **ALL OF OUR PROGRAMMES ARE STATE-RECOGNISED, SYSTEM-ACCREDITED** and continuously monitored for quality.



* From left to right: State-recognised university, institutionally and system-accredited, accredited in distance learning and further accreditations

OUR LEADERSHIP. PROVEN BY OUR AWARDS.



Member of
COVID-19 Global Education Coalition
Launched by UNESCO



THE MOST IMPORTANT AWARD:

THE RECOMMENDATION OF OUR STUDENTS.

96%
RECOMMENDATION RATE.



THANK YOU